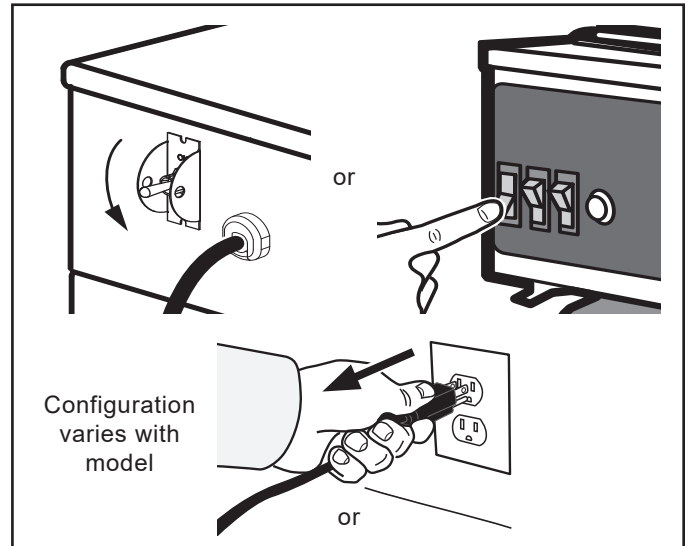




Pour-Over Brewer Long-Term Power-Off Instructions

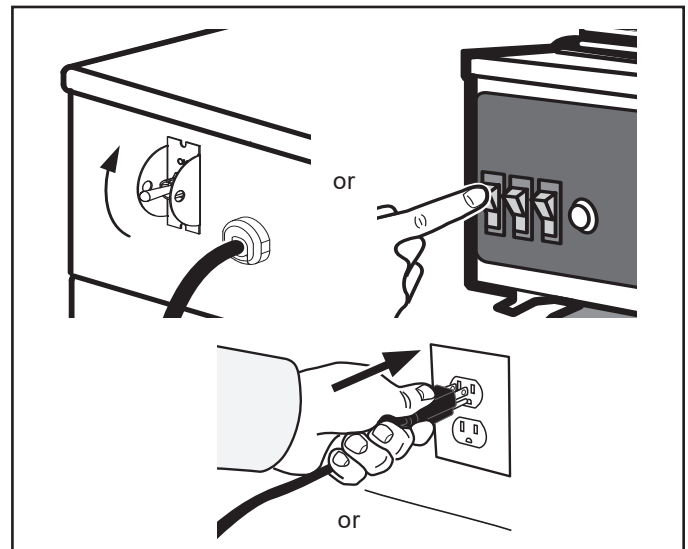
Power-Off Procedure

- 1 To prepare the brewer for an extended period of non-operation, simply turn the main power switch to the “OFF” position, or unplug the power cord (depending on model).



Power-On Procedure

- 2 Turn the power switch to the “ON” position, and/or plug the power cord into the electrical outlet.



- 3 Perform two (2) brew cycles without coffee in the brew basket to clear the water tank.

If you have questions about restoring this unit to operation after extended periods of non-use, please contact your service provider, agent or Curtis Technical Support.



