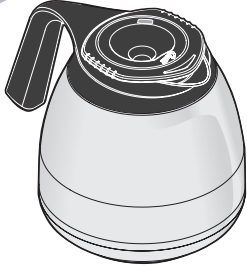


**Service Manual – TFT64 FreshTrac™ Coffee Server**



MODELS:  
 - TFT64/TFT64D  
 - TFT642H/TFT642HD

**Brewing into the Server**

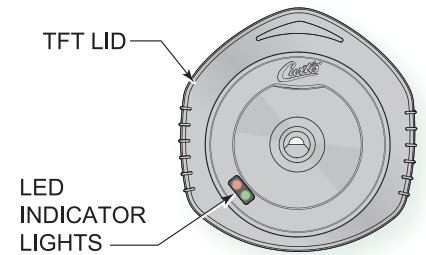
The server has a brew through top to keep heat and flavor in.

1. Place the clean, empty server centered under the brew cone of the coffee brewer.
2. Fill brew cone with ground coffee. Insert it into the brew rails.
3. On the electronic controller of the brewer, press the brew cycle button to start the brew cycle.
4. Allow the coffee brewer to complete the brew cycle. Make sure the brew cone has drained completely before removing the coffee server.

**FreshTrac™ Coffee Timer**

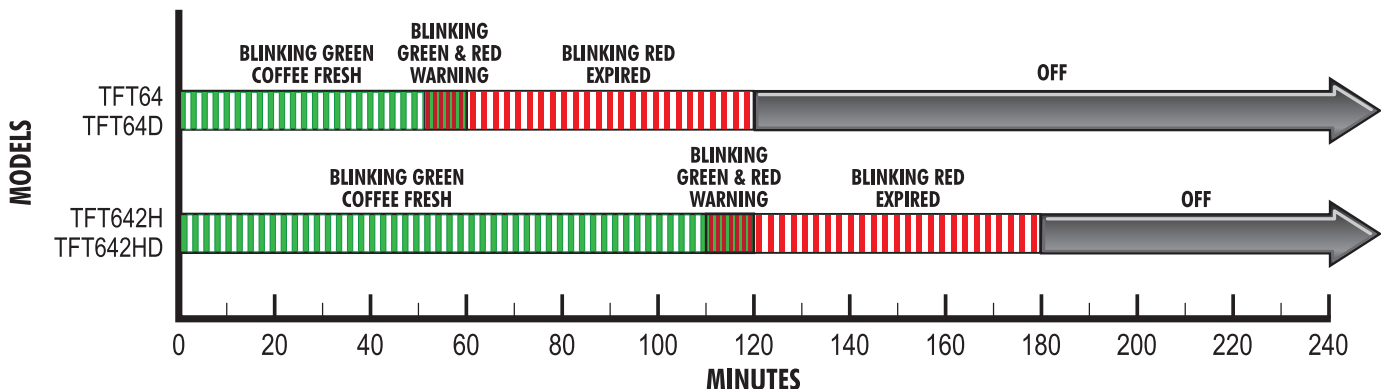
FreshTrac lids (Curtis p/n WC-56077, WC-56077D, WC-56077-2H or WC-56077D-2H) have two unique functions: a coffee quality timer and a volume indicator. Blinking red and green LEDs indicate the coffee freshness and level of coffee remaining in the server.

The FreshTrac activates when brewed coffee flows into the empty server.



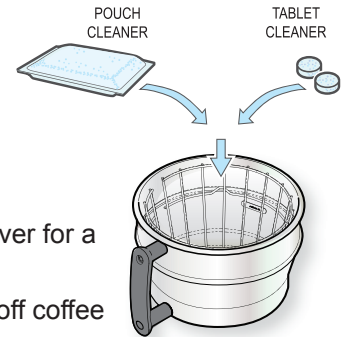
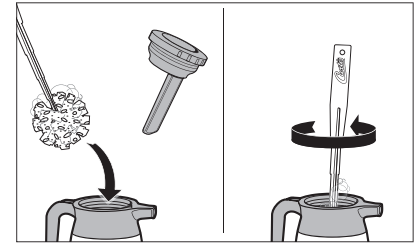
**LED Indicator Lights**

1. **Wake Up Mode** - When coffee starts flowing into the empty server, the LED lights blink alternating Green-Red-Green.
2. **Coffee is Fresh** – The green LED blinks every 6 seconds to designate the coffee in the server is fresh. The blinking green LED will continue for 50 minutes (TFT64 and TFT64D) or 110 minutes (TFT642H and TFT642HD).
3. **Warning Mode** — Green and Red LED Lights alternately blink for 10 minutes.
  - a. When the timer is 10 minutes or less from expiration.
  - b. When volume in the dispenser is 24 oz. or less (+/- 4 oz.).
4. **Time Expired and/or Dispenser is (nearly) Empty** – The Red LED blinks every 6 seconds for 60 minutes when either of the conditions below are true:
  - a. The Fresh Coffee time has expired.
  - b. The coffee dispenser is (nearly) empty – 4 ounces or less.
5. The red LED will stop blinking and turn off after 60 minutes.
6. The TFT timer will reset when the liquid level transitions from 0 ounces to 1 ounce, and when the server remains unchanged for at least 24 seconds at level 0.



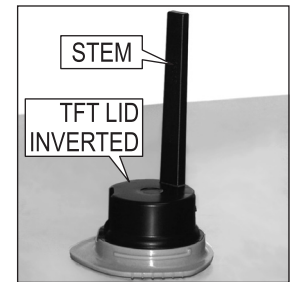
## CLEANING THE COFFEE SERVER

1. In a container, mix a mild detergent and warm water solution for cleaning the coffee server.
2. Discard old coffee from the coffee server.
3. Remove and clean the lid.
4. Clean inside the coffee server with a sponge brush soaked in detergent solution.
5. An easy way to remove mineral deposits from the brew cone and the coffee server is to use a pouch or tablet cleaner.
  - a. Place two tablets or one pouch (refer to manufacturers' recommendation) into the brew cone.
  - b. Place the empty coffee server onto the brew deck.
  - c. Start a coffee brew cycle by pressing the Brew button on the electronic controller.
  - d. When the brew cycle has finished, allow the cleaning solution to sit in the coffee server for a few minutes, then empty the coffee server.
6. Wipe the exterior surfaces with a sponge moistened with the detergent solution. Wipe off coffee spots or stains.
7. Rinse the brew cone and coffee server with running water.
8. Dry the parts and return them to the coffee brewer.



**TFT LID** – The TFT timer has a stem sensor that is built into the lid. Keeping this stem section free from coffee oil build-up ensures that accurate time and volume information is displayed.

1. Before each brew cycle, wipe the stem clean.
2. After cleaning, invert the lid for 30 seconds. This will reset the timer.
3. Replace the lid onto the server. The unit is ready to use.



**Recycle** – Do not dispose in trash. The FreshTrac timer is considered an electronic device that can be recycled. Recycling raw materials from end-of-life electronics is the most effective solution to the growing e-waste problem. Many municipalities have created drop-off locations to help with e-waste issues.



### **WARNING** – TO AVOID DAMAGE AND INJURY

- DO NOT IMMERSE.
- WASH BEFORE USING.
- DO NOT BOIL LIQUIDS IN SERVER.
- DO NOT HEAT SERVER ON WARMER.
- DO NOT USE ON RANGE TOP OF ANY KIND.
- DO NOT PLACE IN DISHWASHER.
- DO NOT DROP.
- DO NOT POUR TOWARDS PEOPLE.

### **Product Warranty Information**

The Wilbur Curtis Co., Inc. certifies that its products are free from defects in material and workmanship under normal use. The following limited warranties and conditions apply:

1 Year from the Original Date of Purchase.

**RETURN MERCHANDISE AUTHORIZATION:** All claims under this warranty must be submitted to the Wilbur Curtis Co., Inc., Technical Support Department prior to performing any repair work or return of this equipment to the factory. All returned equipment must be repackaged properly in the original carton. No units will be accepted if they are damaged in transit due to improper packaging. **NO UNITS OR PARTS WILL BE ACCEPTED WITHOUT A RETURN MERCHANDISE AUTHORIZATION (RMA). RMA NUMBER MUST BE MARKED ON THE CARTON OR SHIPPING LABEL.** All in-warranty service calls must be performed by an authorized service agent. Call the Wilbur Curtis Co., Inc., Technical Support Department to find an agent near you.

ECN 16561 . 5/12/15 @ 12° . rev D



**WILBUR CURTIS CO., INC.**

6913 Acco St., Montebello, CA 90640-5403 USA Phone: 800/421-6150 Fax: 323-837-2410

Technical Support Phone: 800/995-0417 (M-F 5:30A - 4:00P PST) E-Mail: [techsupport@wilburcurtis.com](mailto:techsupport@wilburcurtis.com)