

Banquet Coffee Brewer and Holder



BB
Banquet Brewer



BHK
Banquet Holder

Features - Banquet Brewer

- Digitally Controlled Coffee Temperature
- Brews Up To 9.0 Gallons on Each Side
- Auto/Manual Coffee Agitation
- Dual Wall Insulation
- Automatic Refill
- Closed Brewing System
- Half/Full Batch
- Programmable Custom Volumes
- Coffee Fresh Indicator
- Hot Water Faucet

Features - Banquet Holder

- Closed Holding System
- Holds Coffee at 180°F-190°F
- 40 Gallon Capacity
- Overhead Flexible Rinse Hose

Accessories - Sold Separately



WC-1019 Jug filler



TXSG0301S200 3.0 Gallon dispenser



OMSCP Cart with pneumatic wheels

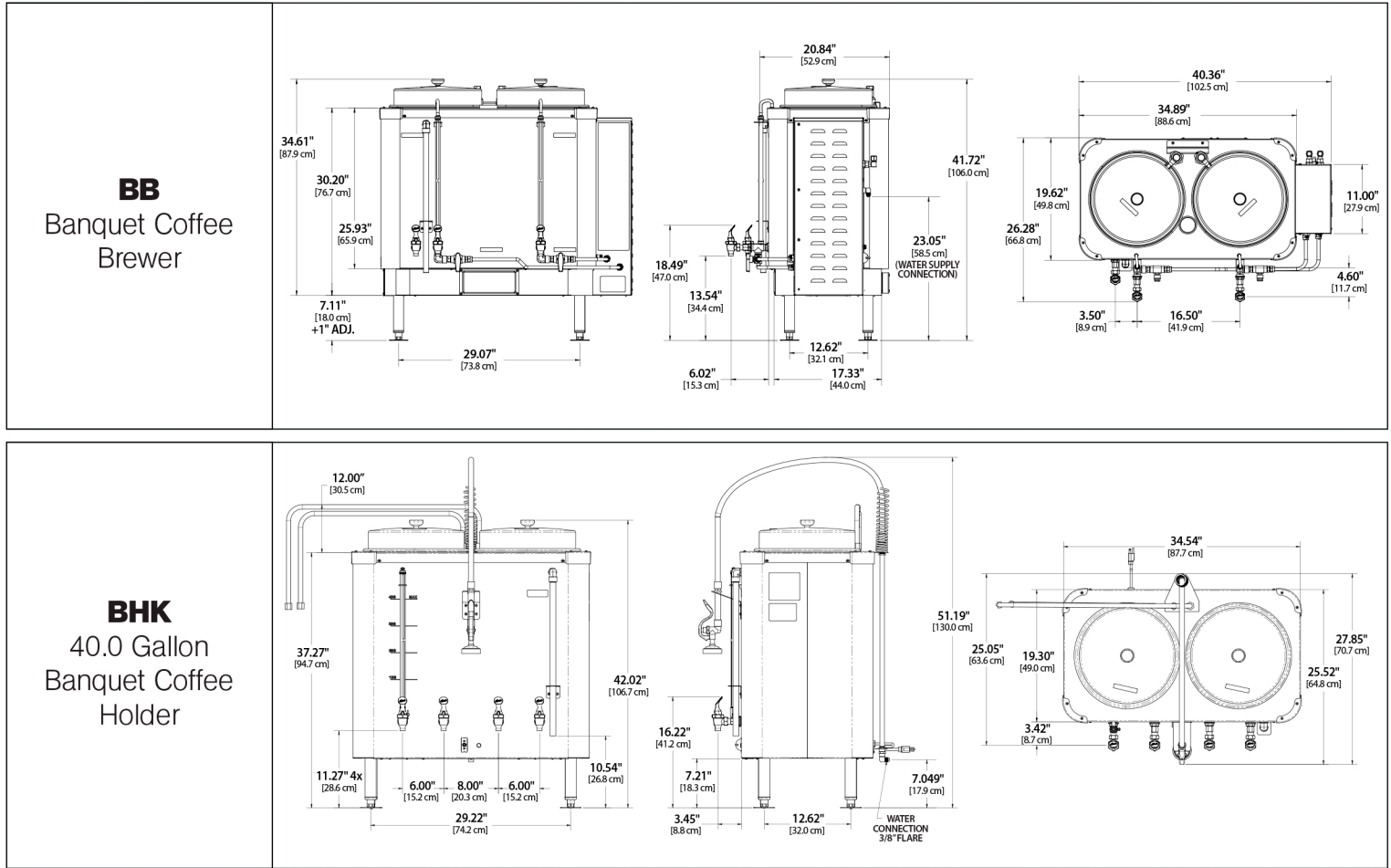


OMSCR Cart with rubber wheels



Perfecting the art of brewing since 1941

Banquet Coffee Brewer and Holder



Specifications

MODEL #	DESCRIPTION	BREW CAPACITY	HEIGHT x WIDTH x DEPTH	SHIP WEIGHT	SHIP CUBE
BB	Banquet Coffee Brewer	18.0 Gallons	41.72" x 40.36" x 26.28"	245.0 lbs.	50.0 cu. ft.
BHK	Banquet Coffee Holder	NA	51.19" x 34.54" x 27.85"	206.0 lbs.	50.0 cu. ft.

Utility Requirements

MODEL #	PHASE	VOLTS	AMPS	ELECTRICAL						WATER			
				MIN. CIRCUIT	HEAT CONFIG	WIRE	WATTS	HERTZ	GAL/HR	CONNECTOR	PRESSURE	MIN. FLOW RATE	TANK VOL.
BB	3 PH	208V	37.3A	50A	3 x 5000W	3W+G	13400W	50/60 Hz	30.0	3/8" Flare	20 - 90 psi	3.0 GPM	33.0 gal.
		220V	39.4A	50A	3 x 5000W	3W+G	15000W	50/60 Hz	30.0	3/8" Flare	20 - 90 psi	3.0 GPM	33.0 gal.
		230V	41.2A	50A	3 x 5000W	3W+G	16396W	50/60 Hz	30.0	3/8" Flare	20 - 90 psi	3.0 GPM	33.0 gal.
		240V	43.0A	50A	3 x 5000W	3W+G	17800W	50/60 Hz	30.0	3/8" Flare	20 - 90 psi	3.0 GPM	33.0 gal.
BHK	1 PH	120V	14.2A	15A	2 x 850W	2W+G	1700W	50/60 Hz	NA	3/8" Flare	20 - 60 psi	0.5 GPM	40.0 gal.

SPECIFICATIONS SUBJECT TO CHANGE WITHOUT NOTICE



WARNING - These products can expose you to chemicals including Acrylamide and Bisphenol A (BPA), which are known to the State of California to cause cancer and birth defects or other reproductive harm. For more information visit www.P65Warnings.ca.gov



Wilbur Curtis Co., Inc. / 6913 Acco Street / Montebello CA 90640
 800.421.6150 / 323.837.2300 / www.wilburcurtis.com
 Perfecting the art of brewing since 1941

AUG/2018 F-5007 revB